



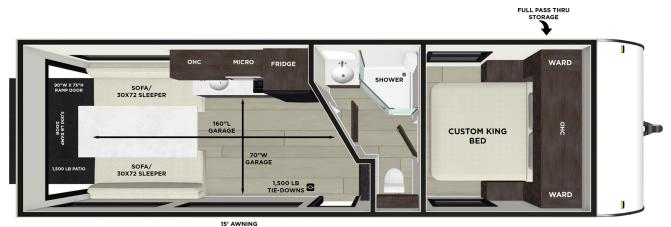
2026 FOREST RIVER SALEM FSX 260RTK

\$39,900.00

\$187 Bi-Weekly

SPECIFICATIONS

Year	2026
Manufacturer	FOREST RIVER
Brand	SALEM FSX
Model	260RTK
Type	Toy Hauler
Status	New
Stock #	016682
Financing Available	✓
Warranty Available	✓
Suspension	N/A
Leveling	N/A
Exterior Length	25.5 ft.
Dry Weight	5398 lbs.
Sleeping Capacity	4 person(s)
Interior Colour	N/A
Exterior Colour	Aluminum
Slideouts	N/A



Disclaimer: Product information, pricing and photos are as accurate as possible and are subject to change without notice.

SELLING FEATURES

Lightweight toy hauler with back ramp patio!

Garage / Cargo Area:

- Cargo Length: 13' 4" (160")
- Cargo Width: 70"
- Cargo Height: 84"
- Ramp Door w/ Patio Deck
- Tie-downs throughout garage
- Convertible sofas + removable table (converts to king bed)
- Payload Capacity: 3,742 lbs total

Exterior Features

- Power awning (15')
- Power tongue jack & stabilizers
- Exterior shower
- Pass-through storage
- Backup camera prep
- Large panoramic windows
- Exterior JBL speakers
- Patio deck w/ railing

Interior Features

- Front king bed w/ storage
- Fireplace & entertainment center
- Dual sofas in garage area
- Pedestal table
- Vinyl flooring throughout
- LED interior lighting
- USB charging ports

Kitchen

- 3-burner cooktop
- Oven / convection microwave combo
- 10 cu. ft. 12V refrigerator
- Deep basin sink w/ high-rise faucet
- Seamless countertops

Bathroom

- Full bath with shower & skylight
- Foot-flush toilet
- Medicine cabinet & vanity
- Power vent fan

Utilities

- 13.5K-15K BTU Ducted A/C

- 20,000 BTU furnace
- On-demand tankless water heater
- Solar prep / optional 200W solar
- 30-50 amp service (auto-detect converter)

Construction & Build

- Powder-coated I-beam frame
- 2" wall construction
- Full walkable roof w/ SuperFlex membrane
- Fiberglass insulation
- Seamless holding tanks

- No hidden fees (freight, PDI, licencing, admin, or battery fee). Simply add the HST! Financing available.

OPTIONS & EQUIPMENT

- Pre-delivery Inspection
- Deep Cycle RV Battery
- Propane Tank(s)
- Licencing Completed
- Electrical Adaptor
- 25' Water Hose
- 10' Sewer Hose
- Thorough Walkthrough

Powered by focusRV