



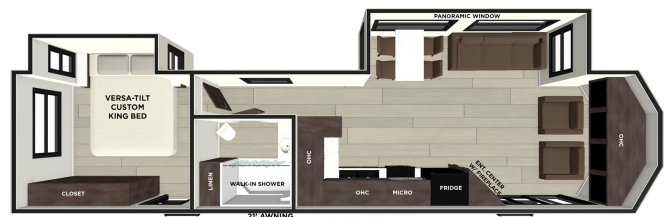
2026 FOREST RIVER SALEM VILLA CLASSIC 353FLFB

\$66,900.00

\$313 Bi-Weekly

SPECIFICATIONS

Year	2026
Manufacturer	FOREST RIVER
Brand	SALEM VILLA CLASSIC
Model	353FLFB
Type	Park Model
Status	New
Stock #	035196
Financing Available	✓
Warranty Available	✓
Suspension	N/A
Leveling	Manual
Exterior Length	35.0 ft.
Dry Weight	9409 lbs.
Sleeping Capacity	4 person(s)
Interior Colour	N/A
Exterior Colour	Aluminum
Slideouts	2



Disclaimer: Product information, pricing and photos are as accurate as possible and are subject to change without notice.

SELLING FEATURES

New 2026 Forest River Salem Villa 353FLFB - New style, new design!

Couple's park model with large front windows featuring open concept living!

Features:

- **Best In Class Value Package:** Versa-Tilt Bed, Upgraded Designer Furniture Package, Exterior LED Light Strip Under Awning, Heated & Enclosed Accessi-Belly (w/ Removable Panels), LED Interior Mushroom Style Bright Lights, Central Vacuum w/ Sweep Attachment, Seamless Countertops (No T-Mold), Modern Cloth Roller Shades w/ AutoStop, Recessed Stove w/ Glass Stove Cover, Stainless Steel Kitchen Appliances, 1.6 CU FT Oversized Residential Whirlpool Microwave, Black Basin Undermount Sink, LED Accent Light PKG: Under Cabinets and Over LR Slides, Stainless Steel Roll Up Sink Cover, 30" Built-In Electrical Fireplace (Heater), VersaBed adjustable Bed
- Sleeps up to 4- rear king bed and a trifold sofa that folds down to a bed
- Living space with trifold sofa, two recliners, free-standing table with four chairs, and entertainment center with fireplace
- Kitchen includes fridge/freezer, microwave, stove top and range, oven, and double basin sink
- Bathroom includes shower, vanity, and toilet
- Power awning
- Deep cycle marine battery and propane tanks
- Full manufacturer's warranty
- Delivery and setup available to your park!
- Dry weight of 9,409 lbs

No hidden fees (freight, PDI, licensing, admin, or battery fee). Simply add the HST!

Financing available.

OPTIONS & EQUIPMENT

- Pre-delivery Inspection
- Deep Cycle RV Battery
- Propane Tank(s)
- Licensing Completed
- Electrical Adaptor
- 25' Water Hose
- 10' Sewer Hose
- Thorough Walkthrough

Powered by focusRV