



CAPITAL RECREATION

roman@capitalrv.ca 1-613-529-1133
3201 County Rd 2, Johnstown, ON K0E 1T1
Local 1-613-529-1133 | <https://www.capitalrecreation.ca/>



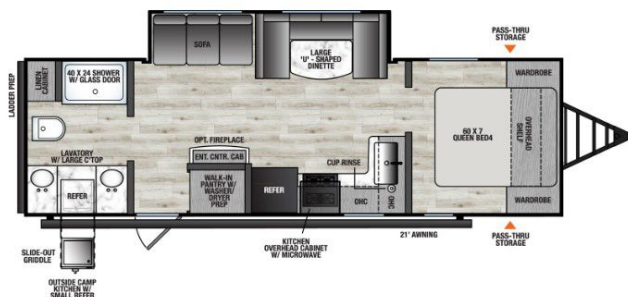
2026 COACHMEN CLIPPER 6K SERIES 25RB

\$39,999.00

Originally \$49,999.00

SPECIFICATIONS

Year	2026
Manufacturer	COACHMEN
Brand	CLIPPER 6K SERIES
Model	25RB
Type	Travel Trailer
Status	New
Stock #	NZJCTW25RB26
Financing Available	✗
Warranty Available	✗
Suspension	N/A
Leveling	N/A
Exterior Length	30.8 ft.
Dry Weight	5868 lbs.
Sleeping Capacity	4 person(s)
Interior Colour	N/A
Exterior Colour	Fiberglass
Slideouts	1



Disclaimer: Product information, pricing and photos are as accurate as possible and are subject to change without notice.

SELLING FEATURES

Specifications and Features:

- Exterior Length: 30 ft 9 in
- Exterior Width: 8 ft
- Exterior Height: 10 ft
- Dry Weight: 5,868 lbs
- GVWR: 7,740 lbs
- Hitch Weight: 740 lbs
- Fresh Water Capacity: 40 gallons
- Gray Water Capacity: 69 gallons
- Black Water Capacity: 32 gallons
- Sleeping Capac...

OPTIONS & EQUIPMENT

- 15 000 BTU Ducted A/C IPO 13 500 BTU A/C
- 50 Amp Service with 2nd 13 500 BTU A/C
- Power Tongue Jack
- Spare Tire & Carrier
- Theater Seats with Cup Holder Tables Trifold Sofa

Powered by focusRV