



## CAPITAL RECREATION

roman@capitalrv.ca 1-613-529-1133  
3201 County Rd 2, Johnstown, ON K0E 1T1  
Local 1-613-529-1133 | <https://www.capitalrecreation.ca/>



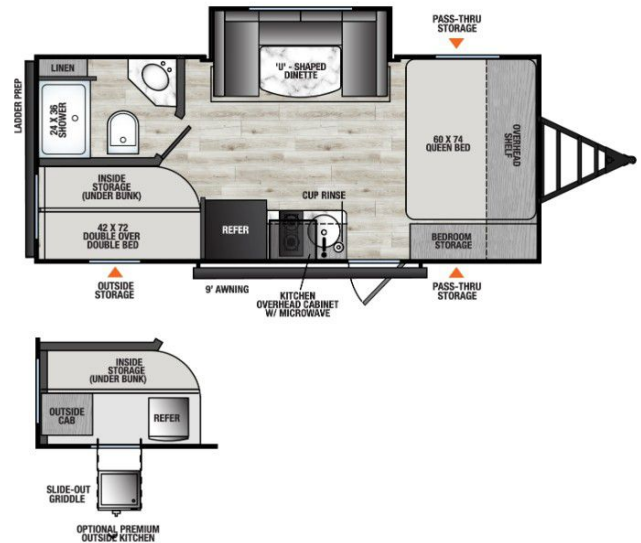
## 2026 COACHMEN CLIPPER 4K SERIES 18DBS

**\$29,999.00**

Originally ~~\$39,999.00~~

### SPECIFICATIONS

Year	2026
Manufacturer	COACHMEN
Brand	CLIPPER 4K SERIES
Model	18DBS
Type	Travel Trailer
Status	New
Stock #	NZJCWT18DBS26
Financing Available	✗
Warranty Available	✗
Suspension	N/A
Leveling	N/A
Exterior Length	23.0 ft.
Dry Weight	4114 lbs.
Sleeping Capacity	7 person(s)
Interior Colour	N/A
Exterior Colour	N/A
Slideouts	1



**Disclaimer:** Product information, pricing and photos are as accurate as possible and are subject to change without notice.

### SELLING FEATURES

Specifications and Features:

- Exterior Length: 23' 0"
- Exterior Height: 10' 0"
- Exterior Width: 96"
- Unloaded Vehicle Weight (UVW): 4,114 lbs
- Gross Vehicle Weight Rating (GVWR): 4,915 lbs
- Hitch Weight: 515 lbs
- Cargo Carrying Capacity (CCC): 801 lbs
- Fresh Water Capacity: 39 gallons...

### OPTIONS & EQUIPMENT

#### 3K & 4K Series (Single Axle) Features & Options

- **QUALITY & APPLIANCE PACKAGE:**
  - 10 Cu. Ft. GE 12V Refrigerator (3.3 Cu. Ft. on 12RD & 12BH)
  - 13.5K GE Roof-Mounted A/C (N/A on 12RD & 12BH)
  - Stainless GE Microwave
  - Stainless GE 2-Burner Cooktop with Range Vent
  - 20K BTU Furnace
  - Tankless On-Demand Water Heater
  - Electric Brakes
  - Easy Lube Axles
  - BAL NXG Frame with Supreme Powder Coating & HUCK Bolt Assembly
  - 5/8" Tongue and Groove Plywood Flooring
  - Drop Edge Thermofoil Countertops
  - Seamless One-Piece TPO Roof Membrane
- **CAMPING MADE EASY PACKAGE:**
  - Solid Entry Steps
  - Black Tank Flush
  - Battery Disconnect
  - Power Awning w/ LED Strip and Adjustable Legs
  - Foot Flush Toilet
  - Back-up Camera Prep
  - Magnetic Baggage Door Latches
  - Smooth Metal Front
  - Solar Prep
  - USB Charging Ports
  - Cable TV Hook-Up
  - Friction-Hinge Door
  - Kitchen Sink Cup Rinser
  - LCI Ladder Prep
  - Vent in Bathroom

- **OPTIONS:**
- Power Tongue Jack
- Spare Tire + Carrier (N/A on 12s)
- 7.0 Cu Ft 2-Way Refer IPO 10 Cu Ft 12V Refer
- Solar Package (200W Panel w/ 30 AMP Solar Controller)
- Outside Camp Kitchen (18BH & 18DBS)
- 15K AC IPO 13.5K
- All-Terrain Tire

Powered by focusRV