



WOODY'S RV WORLD ABBOTSFORD

webleads@woodysrvworldabbotsford.dsmessage.com 1-844-854-1288
31708 Marshall Road, Abbotsford, BC V2T 6B1
Local 1-604-854-1288 | Fax 1-604-854-1406 | https://www.woodysrv.com/



2026 COACHMEN APEX NANO 208BHS

MSRP \$63,980.00

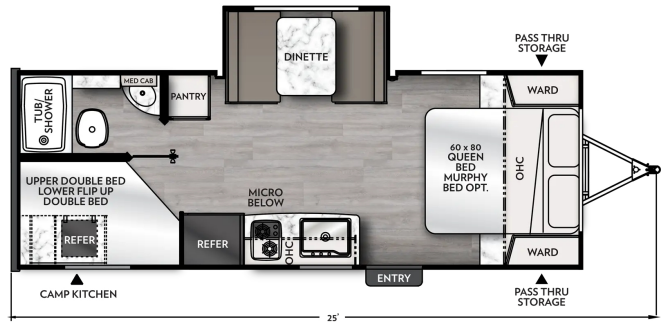
\$229 Bi-Weekly

\$0 down @ 7.99% APR for 60/240 months
(\$22,337 C.O.B.) O.A.C.

Woody's Price \$52,980.00

SPECIFICATIONS

Year	2026
Manufacturer	COACHMEN
Brand	APEX NANO
Model	208BHS
Type	Travel Trailer
Status	New
Stock #	51490
Financing Available	✓
Warranty Available	Manufacturer
Suspension	N/A
Leveling	N/A
Exterior Length	25.0 ft.
Dry Weight	4260 lbs.
Sleeping Capacity	7 person(s)
Interior Colour	N/A
Exterior Colour	Aluma-Cage Construction
Slideouts	1



208 BHS

Disclaimer: Product information, pricing and photos are as accurate as possible and are subject to change without notice.

SELLING FEATURES

Specifications and Features:

- Exterior Length: 25' 0"
- Exterior Height: 10' 0"
- Exterior Width: 7' 6"
- Dry Weight (UVW): 4,260 lbs
- Gross Vehicle Weight Rating (GVWR): 6,000 lbs
- Hitch Weight: 596 lbs
- Cargo Carrying Capacity (CCC): 1,740 lbs
- Fresh Water Capacity: 52 gallons
- Gray W...

OPTIONS & EQUIPMENT

- SORRENTO DECOR
- APEX NANO PACKAGE
- COMFORT PACKAGE
- OFF GRID PACKAGE
- 12 VOLT HEAT PADS FOR BLACK, GREY AND FRESH WATER
- 15" ALL TERRAIN TIRES W/ ALUM RIMS
- STAR GAZER WITH BLINK AND SHADE SYSTEM
- QAI CANADIAN COMPLIANCE
- MVSA SEAL
- RVIA SEAL
- DEALER PICK UP
- SORRENTO CABINETRY
- SHAKER CABINET DOOR FRAMES W/ MAGNETIC CATCHES
- ONE-PIECE SEAMLESS EDGE COUNTERTOPS
- CONGOLEUM RESIDENTIAL-STYLE FLOORING
- OVERHEAD BEDROOM CABINETS W/ SIDE WARDROBES / REMOVABLE SHELF
- HARD VALANCES W/ ROLLER SHADES
- PRESESTAL DINETTE TABLE
- BOOTH DINETTE
- LP LEAK ALARM
- FIRE EXTINGUISHER
- SMOKE ALARM
- CARBON MONOXIDE DETECTOR
- LED INTERIOR LIGHTING

- HIGH VELOCITY 10" POWER ROOF VENT
- MOUNTED PREMIUM ALPINE BLUETOOTH WIRELESS SOEAKER
- MATTRESS W/ COVER
- MAGNETIC CABINET DOOR CATCHES
- ACCESS DOORS UNDER DINETTE
- APEX THROW BLANKET
- DIRECT VENT FURNACE
- 15,000 BTU AIR CONDITIONING
- DUAL 8,000BTU AIR CONDITIONING
- 55AMP POWER CENTER
- 400WATT SOLAR SYSTEM W/ 30AMP CONTROL CHARGER
- OUTSIDE RECEPTACLE GFI
- DETACHABLE MARINE STYLE POWER CORD
- 12V OUTLETS (PASS-THRU)
- USB/USBC CHARGERS
- INVERTER PREP
- 10 CU.FT 12V FRIDGE
- NARROW FLUSH-MOUNT 2 BURNER COOKTOP
- AIRFRYER MICROWAVE
- STAINLESS STEEL SINGLE BOWL SINK W/ FLUSH MOUNT COVER
- ONE-PIECE SEAMLESS EDGE COUNTERTOPS
- MATTE BLACK HARDWARE
- ON DEMAND TANKLESS WATER HEATER 48,000 BTU
- POWER BATH VENT
- WATER HEATER BYPASS VALVE
- ON-DEMAND WATER PUMP
- BELOW FLOOR LOW POINT DRAINS
- FOOT FLUSH TOILET
- SHOWER/TUB SURROUND
- SKYLIGHT IN BATH
- HOT/COLD OUTSIDE SHOWER
- BLACK TANK FLUSH
- 52-GALLON FRESH WATER TANK
- ALUMA-CAGE CONSTRUCTION
- VACUUM BONDED LAMINATED ALUMINUM TRUSSED ROOF W/ DICOR CROSSFLEX MEMBRANE
- VACUUM BONDED LAMINATED DUAL FIBERGLASS SIDEWALLS/REAR WALL
- LAMINATED ALUMINUM FRAMED FLOOR
- CORROSION RESISTANT POWER COATED FRAME
- I-BEAM CHASSIS CONSTRUCTION
- SWING AWAY ASSIST HANDLE
- FIBERGLASS FRONT CAP W/ WINDSHIELD
- HEATED AND ENCLOSED UNDERBELLY W/ FORCED AIR
- GUTTER RAIL
- POWER AWNING W/ LED LIGHT
- 20LB LP TANKS W/ COVER
- DUAL BATTERY TRAY
- SOLID STEP
- TINTED SAFETY GLASS RADIUS WINDOWS
- RADIUS GLASS FRICTION HINGED ENTRANCE DOORS
- DEADBOLT LOCK
- RADIUS THUMB LATCH BAGGAGE DOORS
- BREAK AWAY SWITCH
- BACK-UP CAMERA PREP
- BATTERY DISCONNECT
- FRAME RECEIVER PREP (DUAL AXLES ONLY)
- CAST IRON GRIDDLES
- REGULATED LP PORT
- LADDER PREP
- SPARE TIRE AND CARRIER
- STABILIZER JACKS
- STARLINK PREP

Powered by focusRV