



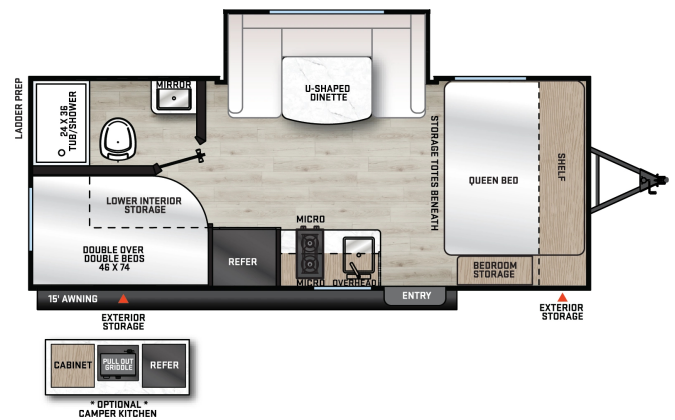
2026 FOREST RIVER AURORA 18BHSX

\$35,340.00

Originally \$45,985.00

SPECIFICATIONS

Year	2026
Manufacturer	FOREST RIVER
Brand	AURORA
Model	18BHSX
Type	Travel Trailer
Status	New
Stock #	26AR017
Financing Available	✓
Warranty Available	✓
Suspension	N/A
Leveling	N/A
Exterior Length	23.1 ft.
Dry Weight	4183 lbs.
Sleeping Capacity	N/A person(s)
Interior Colour	N/A
Exterior Colour	N/A
Slideouts	N/A



Disclaimer: Product information, pricing and photos are as accurate as possible and are subject to change without notice.

SELLING FEATURES

The 2026 Forest River Aurora 18BHSX is an ultra-efficient bunkhouse designed to sleep a large crew (up to 8) while remaining lightweight enough for many mid-sized SUVs.

Specific Layout Features

- Space-Saving Murphy Bed: A front 60" x 74" Murphy bed that converts from a comfortable sofa d...

OPTIONS & EQUIPMENT

Specification Details Length (exterior) 23 ft 1 in Unloaded Vehicle Weight (UVW) 4292 lbs Gross Vehicle Weight Rating (GVWR) Approximately 5500 lbs (estimated based on series) Cargo Carrying Capacity (CCC) Approximately 1208 lbs Number of Slides 1 Sleeps Up to 8 Hitch Weight Approximately 442 lbs Fresh Water Capacity 38 gallons Gray Water Capacity 30 gallons Black Water Capacity 30 gallons LP Tanks Two 20 lb tanks Axles Tandem

Note: Exact GVWR and CCC may vary slightly by options; always verify with the manufacturer or dealer for precise figures.???????

The 18BHS features a practical bunkhouse design optimized for space efficiency:

- **Front Bedroom:** A versatile Murphy bed (60" x 74") that folds down from the wall doubling as a sofa during the day for lounging.
- **Bunkhouse Area:** Rear corner bunks (lower: 28" x 75"; upper: 54" x 75") provide dedicated sleeping for kids or guests with storage below the lower bunk.
- **Living/Kitchen Area:** A slide-out U-shaped dinette expands the interior space serving as a dining spot for four and converting to an additional sleeping surface for two.
- **Bathroom:** A central full bath with a shower toilet sink and linen storage.
- **Entry:** Rear entry door leads directly into the bunkhouse for easy access.

The overall layout maximizes flow with pass-through storage at the front for gear and an open feel when the slide is extended.

Interior Features

The interior blends modern style with practicality using residential-inspired finishes:

- **Kitchen:** Compact yet equipped with a 3-burner cooktop microwave double-door refrigerator (GE stainless 10.7 cu. ft. 12V model) sink and overhead cabinets. Matte black faucets add a sleek touch.
- **Living Space:** Black nightshades on windows for privacy LED lighting and theater seating options. The U-shaped dinette includes a table for meals or games.
- **Entertainment:** 12V TV prep with cable/satellite hookups; Bluetooth stereo system.
- **Climate Control:** Ducted air conditioning (13.5K BTU) and a 20K BTU furnace for all-season comfort.
- **Storage:** Ample cabinetry wardrobes and under-bunk compartments keep everything organized.

Exterior Features

Built for outdoor enjoyment and convenience:

- **Outdoor Kitchen:** Compact camp kitchen with a sink single-burner cooktop and mini-fridge perfect for al fresco meals.
- **Awning:** Power awning with multicolor LED lights and remote control for shaded lounging.
- **Entertainment:** JBL Elite exterior speakers for music outdoors.
- **Access:** Flush-mount baggage doors rear ladder for roof access and an outside shower for rinsing off.
- **Construction:** Aluminum siding enclosed underbelly (on slide models) for winterizing and a spare tire for peace of mind.

