

NIAGARA TRAILERS

rving@niagaratrailers.com 1-800-348-9653
Box 153 1224 York Road, St Davids, ON L0S 1P0
Local 1-905-262-4518 | Fax 1-905-262-4697 | www.niagaratrailers.com



SPECIAL UNIT

\$179,900.00

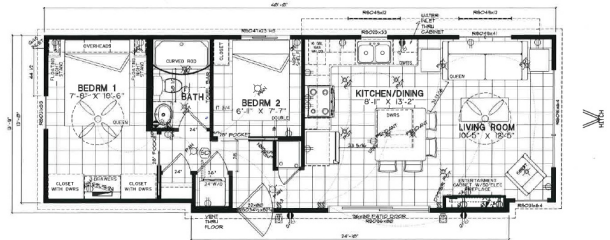
Originally \$189,900

\$791 Bi-Weekly

2025 NORTHLANDER ESCAPE 4 SEASON (2BR)

SPECIFICATIONS

Year	2025
Manufacturer	NORTHLANDER
Brand	ESCAPE
Model	4 SEASON (2BR)
Type	Park Model
Status	New
Stock #	NL202
Financing Available	✓
Warranty Available	✓
Suspension	N/A
Leveling	N/A
Exterior Length	40.0 ft.
Dry Weight	N/A lbs.
Sleeping Capacity	6 person(s)
Interior Colour	SMOKED CENTURY
Exterior Colour	N/A
Slideouts	N/A



Disclaimer: Product information, pricing and photos are as accurate as possible and are subject to change without notice.

SELLING FEATURES

ESCAPE ALL SEASON |

From warm spring breeze and the summer lake, to fall colours and winter ice skates, every season is special. The Escape All Season expands upon everything you love about the original Escape. With enhanced insulation and residential forced air furnace, the Escape All Season ...

OPTIONS & EQUIPMENT

INCLUDED OPTIONS:

- Microwave/Rangehood Combination G.E. Charcoal Filter - Stainless Steel
- Range G.E. 30" Gas with Steam Clean - Stainless
- Refrigerator G.E. 18 Cu Ft. 2 Door TOP FREEZER - Stainless
- Dishwasher G.E. 24" Built-in - Stainless
- Mid Size 24" Stacked G.E. Washer & Propane Gas Dryer - White
- Chair Swivel Style
- Coffee & End Table Set - Monarch - Nesting Tables White Top Chrome Legs
- Lamps - Ashley Table Lamps
- Sofa Hide-A-Bed Sofa Queen Style - With Toss Pillows (QUEEN)
- Bar Stools WITH Backs & Upholstered Seat - After Hours
- Bed Double Bed Set Wood Headboard Duvet Skirt & Shams - King Coil Eastside
- Bed Queen Bed Set Wood Headboard Duvet Skirt & Shams - King Coil Eastside
- Transom Window 48" 11" - Northstar - White 3 1/2" Brick Mold
- Wire Mesh Underbelly - Install with standard underbelly
- Upgrade Siding IPO Standard (ALL DARK COLOURS)
- Ceramic Tile Backsplash
- Countertops - Upgrade to 180FX Series IPO Standard
- Day/Night Pleated Shades
- Potlight LED Wafer Light (Black or White) - 4" (OPTION DIMMER)
- Switch LED Slide Dimmer Switch in place of Standard Switch
- Ceiling Fan complete with Light & Remote - CALIBRE
- Hydro Service 50 Amp in place of 30 Amp. (Incl 30' Cord)
- Plumb and Wire for Dishwasher (Rough-in Only)
- Add Prep for Basement A/C in addition to installed Central A/C Prep
- Prepare for Central Air Conditioning Only
- Fireplace Built-in 50" Electric
- Furnace - Furnace Door for to cover BTU Tall Furnace

ALSO INCLUDES:

- Pre-delivery Inspection
- 10' Sewer Hose with adapter
- Deep Cycle RV Battery
- Propane Tank(s)
- Electrical Adapter
- 25' Water Hose
- RVIA/QAI/Canadian Standard

Powered by focusRV