



## SPECIAL UNIT

**\$69,900.00**

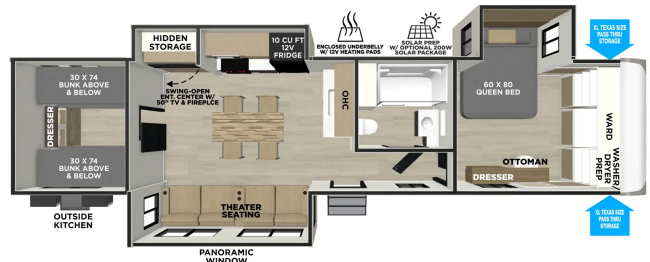
Originally \$71,900

**\$328 Bi-Weekly**

## 2026 FOREST RIVER SALEM HEMISPHERE 301FAM

## SPECIFICATIONS

Year	2026
Manufacturer	FOREST RIVER
Brand	SALEM HEMISPHERE
Model	301FAM
Type	Travel Trailer
Status	New
Stock #	093798
Financing Available	✓
Warranty Available	✓
Suspension	N/A
Leveling	N/A
Exterior Length	36.1 ft.
Dry Weight	10121 lbs.
Sleeping Capacity	8 person(s)
Interior Colour	N/A
Exterior Colour	Fibreglass
Slideouts	3



**Disclaimer:** Product information, pricing and photos are as accurate as possible and are subject to change without notice.

## SELLING FEATURES

All new style 2026 Forest River Salem Hemisphere! Camp in comfort and luxury in this travel trailer!

Features:

**STANDARD FEATURES:** 10 cu.ft. Black Refrigerator (12V) 2nd 13.5K BTU A/C & Prepped for 3rd A/C, Porcelain Toilet Battery Disconnect Located in Pass-Thru Storage Prepped for Roof-Mounted Solar Panel & Charge Controller Residential-Style Micro Shaker Cabinet Door & Drawer Front Pantry Doors with Reeded Glass Inserts & Motion Sensor Lights 31" Glass Front Electric Fireplace (most models) Laminated "Aluma Frame" Sidewalls & Floor with Block Foam Insulation Versa Tilt Power Bed Mechanism - Providing 14.5" of Additional Walk-Around Space (Select Models) Versa Queen Sofa/Bed in Bunk Slides Black Tank Flush Side-Mounted Heat Ducts = No Floor Vents, Step Above Aluminum Steps (Main Entry Door) Extra Large Pass Thru Storage w/ Slam Latch Baggage Doors Upgraded Bunk Mat (Bunk Models) Wood Door Casings IPO Plastic Door Casings Back Up Camera Prep Matte Gold Cabinet Hardware Power Tongue Jack w/ LED Docking Light Residential Single Bowl Undermount Sink LED Awning, Marker & Tail Lights Tri-Fold Sleeper Sofa Or Theater Sofa Undermount Spare Tire & Carrier LP Quick Connect for Grills, Griddles, Fire Tables, etc. 7-Way "Rain Defense" Plug Holder (Front Frame) Outside Shower w/ Hot & Cold Water 50 Amp Service w/ Second A/C

**ELEVATED VALUE PACKAGE (INCLUDED):** WeatherShield One Piece Fiberglass Roof - Leading the Charge Square Windows with Built in Shades with Reflective Thermal-Foil Backing and Painted Hardwood Interior Trim The Ultimate Interior Lighting Upgrade (4K Puck/Strip Lights & LED Back Lit Bathroom Mirror) 60K BTU On-Demand Tankless Water Heaters JBL Sound System (Head Unit & Interior Speakers) Industry-Leading Flush Floor Slide Mechanism Wide Stance Axles (42" hub-to-hub) Lippert OneControl System - Enhanced Control, Connectivity, and Comfort for RV Owners

**EXPEDITION PACKAGE (INCLUDED)** 60" x 80" Beds, 18K BTU Main A/C Furrion Chill Cube Washer/Dryer Prep, 2" Accessory Hitch Receiver Enclosed Underbelly w/ 12V Tank Heaters on all Holding Tanks Nitrogen-Filled Radial Tires w/ Aluminum Rims Power Stabilizer & Tongue Jacks 50" LED SMAR

- Sleeps up to 6 - front rv queen bed and rear bunkroom that sleeps four
- Kitchen features fridge, range with oven, sink and lots of storage including a pantry
- Outdoor kitchen with bar fridge and griddle
- Bathroom with shower, toilet and vanity
- Includes filled propane tanks and deep cycle marine battery
- Full manufacturers warranty
- Dry weight of 10,121lbs

No hidden fees (freight, PDI, licensing, admin, or battery fee). Simply add the HST!

Financing available.

## OPTIONS &amp; EQUIPMENT

- Pre-delivery Inspection
- Deep Cycle RV Battery
- Propane Tank(s)
- Licensing Completed
- Electrical Adaptor
- 25' Water Hose
- 10' Sewer Hose
- Thorough Walkthrough