

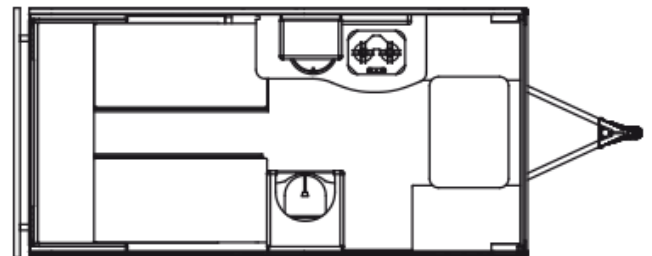
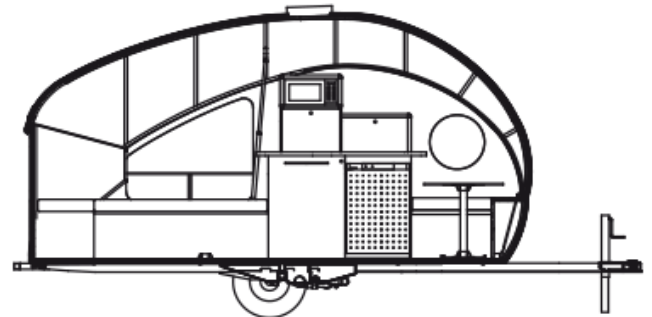


2026 SAFARI CONDO ALTO R1713 - For Viewing Only

SPECIFICATIONS

Year	2026
Manufacturer	SAFARI CONDO
Brand	ALTO
Model	R1713 - For Viewing Only
Type	Travel Trailer
Status	New
Stock #	7592
Financing Available	✓
Warranty Available	✓
Suspension	Torflex
Leveling	Manual
Exterior Length	17.0 ft.
Dry Weight	N/A lbs.
Sleeping Capacity	3 person(s)
Interior Colour	DANISH MAPLE/ CONCRETE/ SKY BLUE
Exterior Colour	SILVER
Slideouts	N/A

Disclaimer: Product information, pricing and photos are as accurate as possible and are subject to change without notice.



SELLING FEATURES

Living Space

- Retractable Roof offering a spacious interior
- 72" x 76" king bed converts to two single beds
- 36" X 81" front single bed
- Portable front table
- Kitchenette with pull-out shelves
- Front storage
- Toilet compartment with shelves

Electrical / LPG Appliances

- Two-burner...

OPTIONS & EQUIPMENT

15" ALUMINIUM WHEELS WITH RADIAL TIRE

15" ALUMINIUM SPARE WHEEL WITH RADIAL TIRE

SILVER EXTERIOR COLOUR

SKY BLUE FABRIC

CABINET FINISH -DANISH MAPLE

COUNTERTOP FINISH- CONCRETE

SHELVES AND POLE IN TOILET CABINET

FRONT WINDOW

WATER HEATER/HEATER LPG/ELECTRIC COMBI 4 COMFORT +

DOUBLE PROPANE TANK

FRIDGE 4.3 CU FT 12V COMPRESSOR WITH WHITE DOOR

BUILT IN MICROWAVE

CHARGER 45A FOR LITHIUM BATTERIES
LITHIUM HEATED BATTERY DC24 100AMP/10H
220 WATT SOLAR PANEL WITH MPPT REGULATOR & MONITOR
12 VOLT VARIABLE SPEED ROOF VENT (AUTOMATIC)
HEAT PUMP AIR CONDITIONER (10 150 BTU) FLOOR MOUNTED
REMOVABLE AWNING 1ST GENERATION WITH 3 POLES
DOUBLE FOLDING ALUMINUM BIKE CARRIER
DOUBLE PROPANE TANK SOFT COVER
REMOTE CONTROLLED TRAILER MOVER
DOUBLE RUBBER WHEEL FOR JACK

Powered by focusRV