



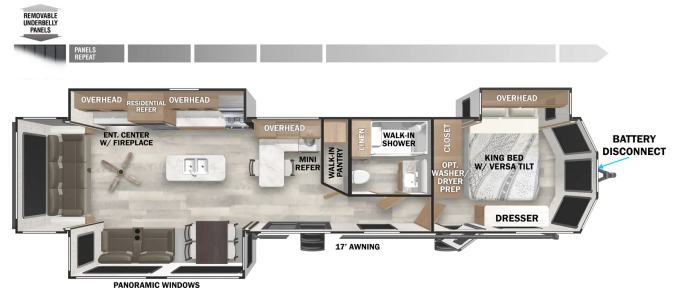
2025 FOREST RIVER SALEM VILLA 40RLB

\$74,900.00

\$351 Bi-Weekly

SPECIFICATIONS

Year	2025
Manufacturer	FOREST RIVER
Brand	SALEM VILLA
Model	40RLB
Type	Park Model
Status	New
Stock #	034493
Financing Available	✓
Warranty Available	✓
Suspension	N/A
Leveling	Manual
Exterior Length	41.0 ft.
Dry Weight	11363 lbs.
Sleeping Capacity	4 person(s)
Interior Colour	N/A
Exterior Colour	Aluminum
Slideouts	3



Disclaimer: Product information, pricing and photos are as accurate as possible and are subject to change without notice.

SELLING FEATURES

Couple's park model with large windows featuring pullout sofa for your overnight guests!

Features:

- **Best In Class Value Package:** 1.6 Cu Ft Oversized Residential Microwave, 7' Slide-Out Height (Living Area), Adjustable Textured Roller Shades, Central Vacuum w/ Sweep Attachment, JBL Stereo, Dimmable Interior LED "Blade Lighting" (Living Area), Heated & Enclosed Accessibelly, LED "Blade Lighting" Under Awning, Rainfall Versa-Sink in Kitchen, Serta Mattress in Bedroom(s), Stainless Steel Kitchen Appliances, Versa-Tilt Bed, Slide-Out Awning Toppers, Soft Close Drawer Guides, 60K On-Demand Tankless Water Heater, 5/8" Tongue & Groove Plywood Floor Decking, 2" Wall Construction, 16" (or less) on Center, 5" Bowed Truss Roof Rafters, 3/8" Roof Decking (Walk-On), Tufflex™ PVC Roofing, Fender Skirt, Fiberglass Insulation Throughout, 96" Interior Height, 30" Radius Fiberglass Door, Cambered Chassis, 2" x 3" Floor Joists 12" on Center, 84" Tall Slide-Out Rooms, 12" Forged I-Beam Frame (Powder Coated), Seamless Holding Tanks, Color Coded Water Lines
- Sleeps up to 4 - rear king bed and the sofa that fold out to a bed
- Living space with one sofa, reclining chair, free-standing table with four chairs, and entertainment center with fireplace
- Kitchen includes fridge/freezer, microwave, stove top and range, oven, and double basin sink
- Bathroom includes shower, vanity, and toilet
- Power awning
- Deep cycle marine battery and propane tanks
- Full manufacturer's warranty
- Delivery and setup available to your park!
- Dry weight of 11,363lbs

No hidden fees (freight, PDI, licensing, admin, or battery fee). Simply add the HST!

Financing and Extended Warranty available.

OPTIONS & EQUIPMENT

- Pre-delivery Inspection
- Deep Cycle RV Battery
- Propane Tank(s)
- Licensing Completed
- Electrical Adaptor
- 25' Water Hose
- 10' Sewer Hose
- Thorough Walkthrough

Powered by focusRV