



SPECIAL UNIT

\$49,900.00

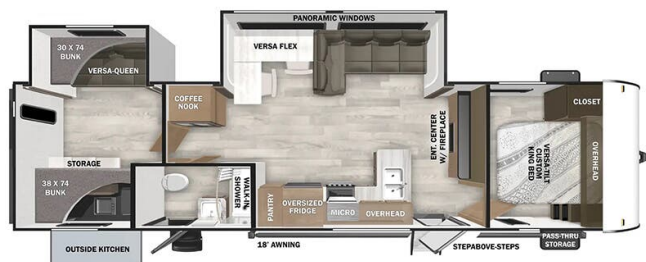
Originally \$54,900

\$239 Bi-Weekly

2026 FOREST RIVER SALEM 32BHDS

SPECIFICATIONS

Year	2026
Manufacturer	FOREST RIVER
Brand	SALEM
Model	32BHDS
Type	Travel Trailer
Status	New
Stock #	339663
Financing Available	✓
Warranty Available	✓
Suspension	N/A
Leveling	N/A
Exterior Length	34.5 ft.
Dry Weight	7993 lbs.
Sleeping Capacity	10 person(s)
Interior Colour	N/A
Exterior Colour	Fiberglass
Slideouts	2



Disclaimer: Product information, pricing and photos are as accurate as possible and are subject to change without notice.

SELLING FEATURES

New 2025 FOREST RIVER SALEM 32BHDS!

Features:

- BEST IN CLASS FEATURES: Versa Furniture, Stow N Go Storage Solution, MorRyde™ StepAbove Triple Step (Entry Door) (N/A 36VBDS), TFL Cabinet Doors, Roof Mount Solar Prep, Adjustable Textured Roller Shades, Backlit Radius Bathroom Mirror, Built-In Laundry Hamper in Bedroom, Back-Up Camera Prep, JBL Stereo, Flush Floor Slide-Out w/Marine Grade Flooring, Exterior Accent Lighting, Dimmable Interior LED "Blade Lighting" (Living Area), Heated & Enclosed Accessibelly, LED "Blade Lighting" Under Awning, 60K On-Demand Tankless Water Heater, 5/8" Tongue & Groove Plywood Floor Decking, Tufflex™ PVC Roofing, Powder Coated I-Beam Frame, 3/8" Roof Decking (Walk-On), Cambered Chassis, Nitrogen Filled Tires, 2" Wall Construction, 16" (or less) on Center, Aerodynamic Front Radius Profile, .040 Smooth Aluminum Front Cap, 5" Bowed Truss Roof Rafters, 2" x 3" Floor Joists 12" on Center, 13 Ply Cross Micro-Laminated Beam Header Above Slide-Out, Seamless Holding Tanks, Color Coded Water Lines
- Sleeps up to 10- front reclining king bed, rear bunk room, and couch that fold down to a bed
- 200 watt roof-mounted solar panel
- Kitchen includes fridge/freezer, microwave, oven, stovetop with cover
- Outdoor kitchen with bumper mounted bbq, bar fridge, sink and storage
- Bathroom with shower, vanity and toilet
- Furnace and ducted A/C
- Spare tire, carrier, and cover
- Includes deep cycle marine battery and propane tanks
- Manufacturer warranty
- Dry weight of 7,993lbs

No hidden fees (freight, PDI, licensing, admin, or battery fee). Simply add the HST! Financing available.

OPTIONS & EQUIPMENT

- Pre-delivery Inspection
- Deep Cycle RV Battery
- Propane Tank(s)
- Licensing Completed
- Electrical Adaptor
- 25' Water Hose
- 10' Sewer Hose
- Thorough Walkthrough