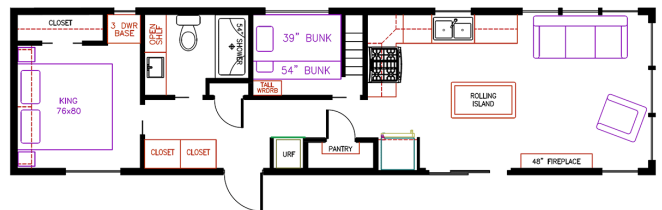


**SPECIAL UNIT****2025 ELEVATION PARK MODEL 5-120CA****SPECIFICATIONS**

Year	2025
Manufacturer	ELEVATION
Brand	PARK MODEL
Model	5-120CA
Type	Park Model
Status	New
Stock #	683244
Financing Available	✓
Warranty Available	✓
Suspension	N/A
Leveling	N/A
Exterior Length	45.0 ft.
Dry Weight	19000 lbs.
Sleeping Capacity	6 person(s)
Interior Colour	N/A
Exterior Colour	Vinyl Siding
Slideouts	N/A



**Disclaimer:** Product information, pricing and photos are as accurate as possible and are subject to change without notice.

**SELLING FEATURES**

Light, bright park model - just arrived!

- Sleeps up to 7 - rear queen bedroom, separate bunkroom with single over double bunks and pull out couch in living area
- Kitchen includes residential fridge and stove, microwave, lots of cabinets and large sink
- Pantry
- Spacious living room complete with couch, recliner chair and end table
- Entertainment space with TV, fireplace and ceiling fan
- Bathroom with stand up shower, vanity, toilet, and lots of storage
- Washer/Dryer prep
- Two door entrance and entrance way closet as well as two additional closets
- Manufacturers warranty
- Delivery and set up available!

**Construction:**

- Architectural Shingles - 40 Year Warranty
- 7/16" OSB Roof Decking w/ Ice & Weather shield
- 2x6 Perimeter Fascia
- Engineered Truss Rafters 16" o.c.
- Fixed Side Overhangs
- Vinyl Siding w/50 Year Warranty
- Fiberglass Insulation with ZIP foam: R-32 Sidewalls, R-22 Floors, & R-33 Roof
- Weather resistant Thermo-Sheathing
- Metal Strapping Connecting Sidewalls to Floor
- 2x4 Sidewall Studs 16" o.c.
- 10" Steel I-Beam Frame w/ 4 axles
- 2x6 Floor joists 16" o.c.
- Floor ductwork w/ perimeter registers
- 5/8" Decking w/ water sealant
- 6' Vinyl Patio Door
- Vinyl Thermopane Windows w/ Argon
- Shed Dormers Entire Length
- Removable CSA Hitch
- Metal Hurricane Straps

**Standard Features:**

- 50 Amp Electrical cord (36')
- Central Air
- 30-gallon electric W/H w/ lighted switch
- 18' GE Refrigerator w/ top freezer - Black

- 30" GE Gas Range – Black
- 30" Over the Range Microwave – Black
- Stainless Steel Deep Kitchen Sink
- Pull down spray kitchen faucet
- Rollaway Island w/ Bar Stools
- Black or Brushed Nickel hardware
- Kitchen Island Pendant Lights
- LED lights under Kitchen Cabinets
- Custom high-end residential cabinetry
- Baseboard Moulding throughout
- Toe Kicks in Cabinetry, Cabinet Crown Moulding
- Raised Panel Interior Doors
- Cordless 2" Blinds
- LED can lights throughout
- Ceiling Fan w/Light – LR (BRM non loft only)
- 60 x 80 Standard King premium mattress
- 2 Night Stands in Bedroom
- Master BRM hanging wardrobe w/ drawer bank
- Recliner Chair
- Hide a bed sofa
- Fiberglass Shower w/ fiberglass headwell
- Single Lever Bathroom Faucet
- Stainless Steel Bathroom Sink
- Residential House Toilet
- Power bathroom vent
- TV Jack in LR, BRM & Loft
- USB outlets in Kitchen, Bedroom, & Loft
- Porch Lights by Each Door
- Exterior 110 GFI outlet
- Fire Extinguisher
- Smoke & CO2 Detector

#### Upgraded Options:

- Ceiling: Black Ceiling Beam
- AC System Park Pak
- Furnace: 56,000 BTU Upright
- Water Heater 30 Gallon Electric
- Washer/Dryer
- Furnace Close-Off Door
- Lift Up Bed Box
- Upgraded exterior Indigo Siding
- Galvanized Metal Underbelly
- Shake Siding - Front End & Dormers
- ZIP System ZIP System OSB w/Built In Moisture Barrier
- Windows - 60" 60" Tall Windows on Front End Wall
- Sofa Style Queen Hide-A-Bed
- Entertainment Center- Full Height
- 48" Base Fireplace, Full Height
- Feature Wall - Location Fireplace
- Smart LED TV 55"
- Sink- Black Farm Sink
- Dinette Style: Rolling Island
- Shower/Tub Door: Black
- Toilet - Elongated

No hidden fees (freight, PDI, licensing, admin, or battery fee). Simply add the HST! Financing available.

## OPTIONS & EQUIPMENT

- Pre-delivery Inspection
- Thorough Walkthrough

Powered by focusRV