



## CAPITAL RECREATION

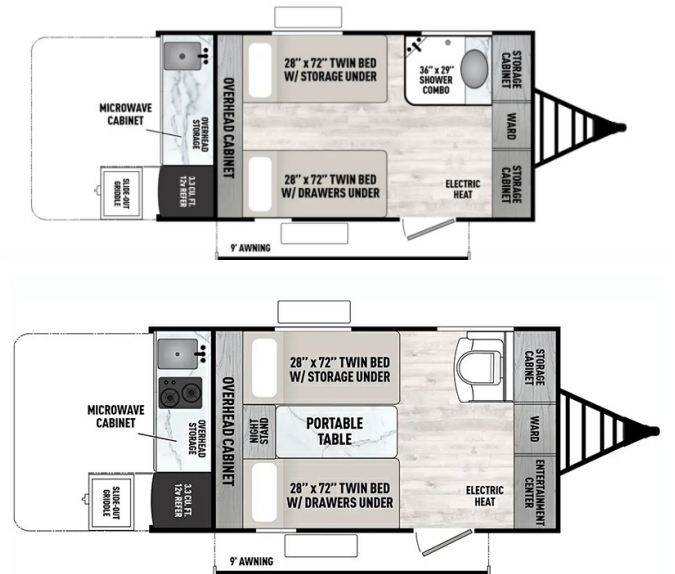
roman@capitalrv.ca 1-833-359-9781  
3201 County Rd 2, Johnstown, ON K0E 1T1  
Local 1-833-359-9781 | <https://www.capitalrecreation.ca/>



## 2025 COACHMEN CLIPPER ROK 11000ROK

### SPECIFICATIONS

Year	2025
Manufacturer	COACHMEN
Brand	CLIPPER ROK
Model	11000ROK
Type	Travel Trailer
Status	New
Stock #	T00002
Financing Available	✓
Warranty Available	✓
Suspension	N/A
Leveling	N/A
Exterior Length	16.1 ft.
Dry Weight	2419 lbs.
Sleeping Capacity	2 person(s)
Interior Colour	N/A
Exterior Colour	Aluminum
Slideouts	N/A



**Disclaimer:** Product information, pricing and photos are as accurate as possible and are subject to change without notice.

### SELLING FEATURES

Specifications and Features:

- Length (ft): 16'1"
- Width (ft): 8'4"
- Height (ft): 8'0"
- GVWR (lbs): 3765
- Dry Weight (lbs): 2419
- Payload Capacity (lbs): 1346
- Hitch Weight (lbs): 265
- Number Of Fresh Water Holding Tanks: 1
- Total Fresh Water Tank Capacity (gal): 26
- Number Of Gray W...

### OPTIONS & EQUIPMENT

- PAINT & FINISH
- WHEELS & TIRES
- ELECTRICAL
- INTERIOR

Powered by focusRV