



GREAT ESCAPE RV

justin@greatescapervcanada.com 1-888-716-4542

RR42 - 24265 Richmond St. N, LONDON, ON N5X 4B2

Local 1-519-227-4700 | Fax 1-519-227-4788 | www.greatescapervcanada.com

2023 K-Z INC. Connect SE 191MBSE

\$39,995.00

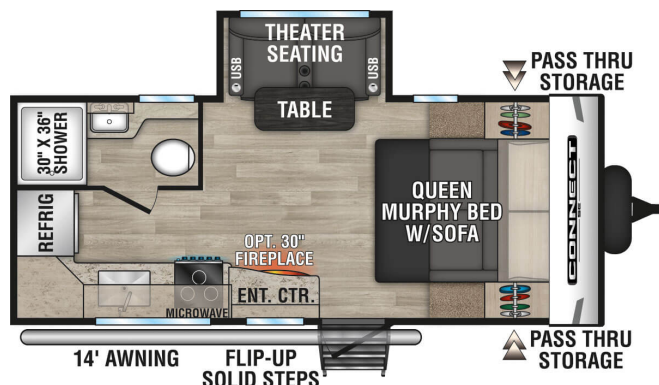
Originally \$49,995.00

\$224 Bi-Weekly

SPECIFICATIONS

| | |
|---------------------|----------------|
| Year | 2023 |
| Manufacturer | K-Z INC. |
| Brand | Connect SE |
| Model | 191MBSE |
| Type | Travel Trailer |
| Status | New |
| Stock # | N1306 |
| Financing Available | ✓ |
| Warranty Available | ✓ |
| Suspension | N/A |
| Leveling | Manual |
| Exterior Length | 22.6 ft. |
| Dry Weight | 4700 lbs. |
| Sleeping Capacity | 2 person(s) |
| Interior Colour | Ashwood |
| Exterior Colour | Fiberglass |
| Slideouts | 1 |

Disclaimer: Product information, pricing and photos are as accurate as possible and are subject to change without notice.



SELLING FEATURES

Connect SE is the ultimate travel trailer offering spacious floorplans, yet is still lightweight enough for the adventure of your dreams. In Connect SE, you'll find that exploration has all the comforts of home.

The 191MBSE is a perfect couples trailer, that offers a Murphy bed, to help create...

OPTIONS & EQUIPMENT

| | | | | | | |
|------------------|---------------------|-------------------|----------------------------|---------------------|------------------|------------------|
| Awning 14' | Fridge with 2 doors | Heating | Solid Surface Counter Tops | Enclosed Underbelly | Fully Furnished | Stabilizer Jacks |
| LPG Detector | Microwave | Convection Oven | Monitor Panel | Power Bath Vents | 1 Sky Light(s) | |
| Smoke Detector | Spare with Carrier | Toilet Facilities | Gas/Elec Water Heater 6 | Power Awning | Rear Camera Prep | |
| Solar Panel Prep | Power Awning | Rear Camera Prep | Solar Panel Prep | | | |

Powered by RVHotline Canada & SynergyPro Solutions