



## SICARD RV

sales.leads.focusrv@sicardrv.com 1-800-688-2210  
7526 Regional Road 20, West Lincoln, ON L0R 2A0  
Local 1-905-957-3344 | Fax 1-905-957-7855 | www.sicardrv.com

### SPECIAL UNIT

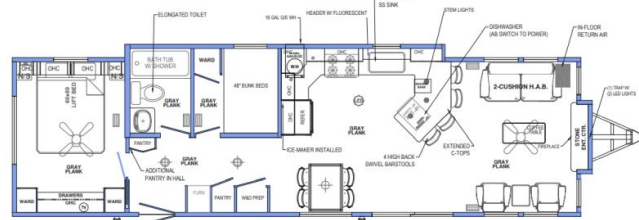
**\$129,990.00**

Originally \$169,990

## 2023 FOREST RIVER QUAILRIDGE 45-AKFL-2B-C

### SPECIFICATIONS

Year	2023
Manufacturer	FOREST RIVER
Brand	QUAILRIDGE
Model	45-AKFL-2B-C
Type	12 Wide
Status	New
Stock #	21027
Financing Available	✗
Warranty Available	✗
Suspension	N/A
Leveling	N/A
Exterior Length	45.0 ft.
Dry Weight	13700 lbs.
Sleeping Capacity	6 person(s)
Interior Colour	Onyx
Exterior Colour	Sandalwood
Slideouts	N/A



**Disclaimer:** Product information, pricing and photos are as accurate as possible and are subject to change without notice.

### SELLING FEATURES

The 2023 Quailridge 45-AKFL-2B-C, by Forest River, is designed for extended stays. This 12 Wide features bunk beds, a pull-out sofa bed & sleeps up to 6 people. All Quailridges are backed with a 1 year manufacturer limited factory warranty. Start enjoying everything the RV lifestyle has to offer ...

### OPTIONS & EQUIPMENT

- R-22 INSULATION ROOF & FLOOR
- ICE GUARD
- HOUSE TYPE REAR DOOR W/STORM IPO W/A
- SANDALWOOD EXTERIOR VINYL SIDING
- LINEALS (WHITE) EXTERIOR WINDOW TREATMENT
- BURNT SIENNA (TAN) SHINGLE COLOR
- ASH WEAVE INTERIOR WALLS
- 4" MOSAIC TILE - GRAY ALPINE KITCHEN BACKSPLASH
- QR EXTERIOR ESSENTIALS PACKAGE
- QR INTERIOR ESSENTIALS PACKAGE
- BUTTER RUM FPI CABINETS
- BRUSH NICKEL "T" STYLE CABINET AND DRAWER HANDLES FOR CABINETS
- GRAY PLANK LINO
- LINO THROUGHOUT
- ONYX / BLACK INTERIOR DECOR
- RECLINER BLACK
- DOLCE VITA 180FX COUNTERTOP
- STAINLESS STEEL APPLIANCES
- SINGLE BOWL STAINLESS STEEL KITCHEN SINK
- 18" STAINLESS STEEL DISHWASHER
- ICEMAKER INSTALLED
- WASHER/DRYER PREP
- TRAPEZOID WINDOW LR W/2 LED LIGHTS
- FIXED OVERHANGS
- 56K BTU UPRIGHT FURNACE
- 15,000 BTU FLOOR DUCTED AC
- 16 GAL G/E HOT WATER HEATER W/DSI W/A
- HANDICAP TOILET
- EXTRA TV JACK - SEE PRINT
- EXTRA EXTERIOR 110V RECEPT
- ELECTRIC FIREPLACE W/A
- POCKET DOOR IPO (BATH)
- ADDITIONAL PANTRY IN HALL
- LIFT UP QUEEN BED W/STORAGE
- EXTEND COUNTERTOPS
- BUILD TO Z-241 INCLUDES SEAL, OSB & HOUSE WRAP
- LAYTITE STONE ENTERTAINMENT CENTER

- COFFEE TABLE
- 4 26" HIGH BACK SWIVEL BARSTOOLS

Powered by RVHotline Canada & SynergyPro Solutions