



SICARD RV

sales.leads.focusrv@sicardrv.com 1-800-688-2210
7526 Regional Road 20, West Lincoln, ON L0R 2A0
Local 1-905-957-3344 | Fax 1-905-957-7855 | www.sicardrv.com

SPECIAL UNIT

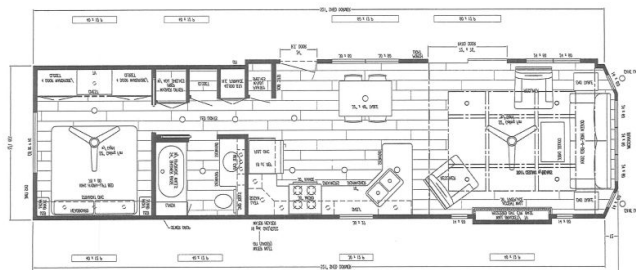
\$179,990.00

Originally \$199,990

2023 WOODLAND PARK TIMBER RIDGE REVELSTOKE TC-303C

SPECIFICATIONS

Year	2023
Manufacturer	WOODLAND PARK
Brand	TIMBER RIDGE
Model	REVELSTOKE TC-303C
Type	12 Wide
Status	New
Stock #	20807
Financing Available	✗
Warranty Available	✗
Suspension	N/A
Leveling	N/A
Exterior Length	44.0 ft.
Dry Weight	N/A lbs.
Sleeping Capacity	4 person(s)
Interior Colour	Cooper Cream / Slate Gray Cabinets / Cem
Exterior Colour	Harvard Slate
Slideouts	N/A



Disclaimer: Product information, pricing and photos are as accurate as possible and are subject to change without notice.

SELLING FEATURES

The 2023 Timber Ridge Revelstoke TC-303C, by Wooldand Park, has plenty of interior living space. This 12 Wide features a table and chairs dinette, a pull-out sofa bed & sleeps up to 4 people. All Timber Ridges are backed with a 3 year manufacturer limited factory warranty. Start enjoying everythi...

OPTIONS & EQUIPMENT

- RECLINER WALL-A-WAY (2)
- RECEPT USB (2)
- CABINET BEDROOM 4 DOOR WARDROBES (2)
- CABINET COLOR SLATE GRAY - UNIT TRIMMED IN GRAY
- LOWER FASCIA (PER FT) - DOORSIDE
- CEILING TRAY ADOBE W/BEAMS AND LED LIGHTS - USE KNOT GRAYSTONE FOR TRAY W/SNOW WHITE BEAMS
- DORMER SHED SINGLE - FULL DORMERS
- PVC PLANK UPGRADE BEECH
- WALLBOARD COOPER CREAM
- CEILING BOARD ADOBE FROST
- DOOR (REAR AND PATIO) AND WINDOW COLOR WHITE
- DOOR (REAR AND PATIO) & WINDOW NO GRIDS
- DOOR REAR HOUSE TYP FIBERGLASS W/STORM AND WINDOW
- INTERNAL BLIND FOR REAR DOOR (NO GRIDS)
- DOOR PATIO THERMOPANE VINYL 6"
- WINDOW VINYL LOW-E THERMOPANE
- WINDOW TRANSOM
- INSULATION (R13 WALLS / R21 CEILING)
- RADIANT FOIL FLOOR
- RADIANT FOIL ROOF
- RADIANT FOIL SIDE WALLS, FRONT AND REAR
- BAY (ANGLED) FRONT 12" DEEP (2X3)
- GAS LINE TO REAR ONLY
- UNDERBELLY ALUMINUM
- HITCH DETACHABLE
- HITCH ORIENTATION STD
- AXLE 4TH
- SWAP LOCATION OF FURNACE & W/D CLOSET
- CUSTOM BATH
- ONE ADDITIONAL CABINET COLOR - IRISH CAFE - KITCHEN OVERHEADS
- CABINET DOOR HARDWOOD CHAMFER SHAKER STYLE
- CABINET HARDWARE BLACK MATTE
- CABINET DRAWER GUIDES SELF CLOSING
- CABINET DOOR WITH SOFT CLOSING HINGES
- COUNTERTOP SOLID SURFACE W/SINK AND BACKSPLASH TAMBORA
- INTEGRATED SINKS
- CABINET KITCHEN LAZY SUSAN IN OHC

- WINDOW SILLS VINYL THRU OUT
- CABINET KITCHEN FULL DEPTH CAB OVER FRIDGE
- CABINET KITCHEN FINISH TOPS ON OHC'S
- CHAIR RAIL THRU OUT
- TRIM AROUND ALL WINDOWS 1 3/4"
- MOLDING CROWN AROUND CABINETS
- MOLDING INTERIOR BASE 3"
- CABINET BEDROOM STRAIGHT OHC
- CABINET BEDROOM CHEST OF DRAWERS
- VALANCE ABOVE CHEST
- NIGHTSTANDS BUILD IN W/DOOR (2)
- CABINET ENTERTAINMENT BASE FOR 36" FIREPLACE
- WALL ACCENT COLOR KNOT GRAYSTONE
- CABINET BATH OVERHEAD TOILET
- CABINET BATH EXTEND LAV TOP OVER TOILET
- DOOR LOUVERED FOR FURNACE
- FAUCET LAV BLACK MATTE
- FAUCET KITCHEN SINGLE HANDLE PULL DOWN BLACK MATTE
- SHOWER FIBERGLASS TUB 1 PC
- SHOWER WALL UPGRADE DUMAWALL WIND DUST
- SHOWER DOOR CLEAR GLASS FOR 1 PC TUB
- SHOWER DOOR WITH BLACK GRIDS
- SHOWER HEAD FIXED MATTE BLACK
- TOILET RESIDENTIAL
- VALVES WATER SHUT OFF FOR STANDARD FIXTURES
- POWER BATH VENT W/ NO LIGHT IN VENT
- CEILING FAN IN LIVING ROOM AND BEDROOM
- 50 AMP
- TV / CABLE JACK (2)
- RECEPT GFI EXTERIOR (2)
- DIMMER SWITCH PER LIGHT
- LIGHTS EAVE LED EXTERIOR (PR)
- LIGHTS LED W/DIMMER UNDER KITCHEN OHC
- LIGHTS LED W/DIMMER (3) BOTTOM OF BR OHC
- LIGHTS LED IN BEDROOM VALANCE
- LIGHTS LED FLOOR ACCENT KITCHEN AND BATH TOE KICKS
- LIGHTS LED IN CEILING
- LIGHT PORCH DARK BRONZE
- TV BRACKET WALL MOUNT FULL MOTION 32"-50" UP TO 80#
- TV LED 50"
- CO DETECTOR (CA)
- LP GAS DETECTOR (CA)
- FIREPLACE ELECTRIC 36"
- FURNACE 45,000 BTU HIGH EFFICIENCY
- A/C BOOT 12-2 WIRE W/SINGLE 20AMP BREAKER W/JBOX
- REFRIGERATOR FROST FREE 18 C.F. STAINLESS STEEL
- DISHWASHER 18" STAINLESS STEEL
- WASHER/DRYER PREP 110V W/CENTER SHELF
- SHELVES ADJUSTABLE ABOVE & BELOW CTR IN W/D CLOSET
- MICROWAVE SPACEMAKER 30" STAINLESS STEEL
- MICROWAVE VENT THRU WALL
- RANGE GAS DELUXE W/ELECTRIC IGNITION STAINLESS STEEL
- WATER HEATER GAS/ELECTRIC 16 GAL W/DSI
- WATER HEATER LIGHTED SWITCH
- DECOR COLOR CEMENT FURNITURE
- SOFA SLEEPER QUEEN DAWSON
- TABLE DINETTE SMOOTH FARMHOUSE (PAINTED) W/4 FABRIC CHAIRS
- COFFEE TABLE SMOOTH FARMHOUSE
- HEADBOARD FABRIC PEWTER
- BED UPGRADE HYDRA LIFT KING
- BLIND FAUX WOOD WHITE
- SIDING VINYL RESIDENTIAL HARVARD SLATE
- SHINGLES UPGRADE ARCH LIFETIME WARRANTY DUAL BLACK
- WINTERGUARD ROOF UNDERLAYMENT
- SEAL CRVA - BUILD TO Z-241 CODE
- TABLE LAMP BLACK (2)
- END TABLE SMOOTH FARMHOUSE (2)

Powered by RVHotline Canada & SynergyPro Solutions