



NIAGARA TRAILERS

rving@niagaratrailers.com 1-800-348-9653
 Box 153 1224 York Road, St Davids, ON L0S 1P0
 Local 1-905-262-4518 | Fax 1-905-262-4697 | www.niagaratrailers.com

SPECIAL UNIT

2022 K-Z INC. CONNECT SE 281BHSE

SPECIFICATIONS

| | |
|---------------------|----------------|
| Year | 2022 |
| Manufacturer | K-Z INC. |
| Brand | CONNECT SE |
| Model | 281BHSE |
| Type | Travel Trailer |
| Status | New |
| Stock # | SP1208 |
| Financing Available | ✓ |
| Warranty Available | ✓ |
| Suspension | N/A |
| Leveling | N/A |
| Exterior Length | 28.0 ft. |
| Dry Weight | 6162 lbs. |
| Sleeping Capacity | 9 person(s) |
| Interior Colour | ASHWOOD |
| Exterior Colour | N/A |
| Slideouts | 1 |

Disclaimer: Product information, pricing and photos are as accurate as possible and are subject to change without notice.

SELLING FEATURES

LIGHTWEIGHT TRAVEL TRAILERS

Connect SE is the ultimate travel trailer offering spacious floorplans yet still lightweight enough for the adventure of your dreams. In Connect SE, you'll find that exploration still has all the comforts of home.

KEY FEATURES:

- Exterior docking station
- RV...

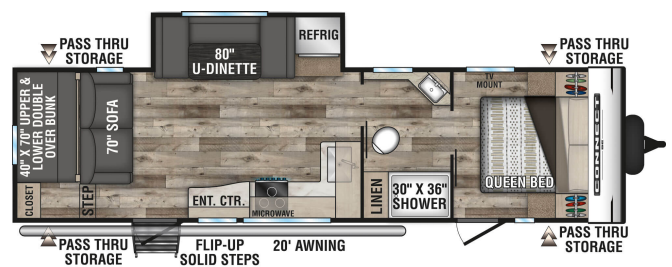
OPTIONS & EQUIPMENT

INCLUDED OPTIONS:

- 8CF Gas/Elect Refrigerator
- 15 000 BTU AC
- LED TV
- Goodyear Tires

Also Includes:

- Freight
- Pre-delivery Inspection
- 10' Sewer Hose with adapter
- Deep Cycle RV Battery
- Propane Tank(s)
- Electrical Adapter
- 25' Water Hose
- RVIA/QAI/Canadian Standard



Powered by RVHotline Canada & SynergyPro Solutions