



## WOODY'S RV WORLD ABBOTSFORD

webleads@woodysrvworldabbotsford.dsmessage.com 1-844-854-1288

31708 Marshall Road, Abbotsford, BC V2T 6B1

Local 1-604-854-1288 | Fax 1-604-854-1406 | <https://www.woodysrv.com/>

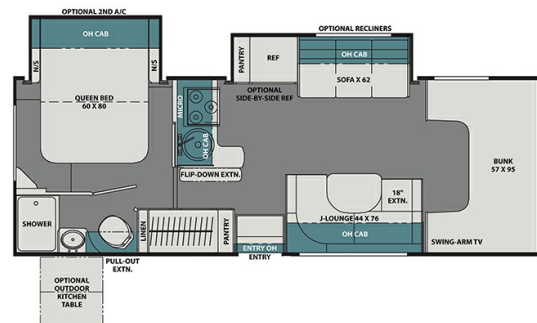
## 2023 COACHMEN LEPRECHAUN 260DS

MSRP \$209,980.00

Woody's Price

### SPECIFICATIONS

Year	2023
Manufacturer	COACHMEN
Brand	LEPRECHAUN
Model	260DS
Type	Motorhome
Class	C
Fuel Type	Gas
Status	PreOwned
Stock #	46013
Financing Available	✓
Warranty Available	For Purchase
Odometer	3865
VIN	1FDXE4FN0PDD29502
Chassis	Ford E450
Engine	350HP V8
Transmission	AUTO
Suspension	N/A
Leveling	N/A
Exterior Length	27.4 ft.
Dry Weight	14500 lbs.
Sleeping Capacity	8 person(s)
Interior Colour	IRISH MIST
Exterior Colour	Fiberglass
Slideouts	2



**Disclaimer:** Product information, pricing and photos are as accurate as possible and are subject to change without notice.

### SELLING FEATURES

Specifications and Features:

- Chassis Brand: Ford
- Engine Type: V8
- Chassis Model: E450
- Cylinders: 8
- Horsepower (bhp): 350
- Torque (Ft Lbs): 468
- Fuel Type: Gas
- Transmission Brand: TorqShift
- Transmission Type: Automatic
- Number Of Speeds: 6
- Driveline Type: 4X2
- Length (ft): 2...

### OPTIONS & EQUIPMENT

- CANADIAN COMPLIANCE (KPH)
- EXTERIOR CAMP TABLE
- CRV SUPERSPRINGS RIDE
- EQUALIZER STABILIZER JACKS
- SOLID SURFACE COUNTERTOPS
- EXT. ENTERTAINMENT 24"
- DRIVER/PASS SWIVEL SEATS
- EXPLORER PACKAGE
- PLATINUM EDITION
- CARMEL PAINTED CAB
- CRV SUPERSPRINGS DISCOUNT
- JASPER DECOR
- MVSA SEAL
- RVIA SEAL
- DISCOUNT

- DISCOUNT2
- SEAL WOODGRAIN
- AB & SASKATOON PERMITS
- TOLLS
- CARMEL CAB PAINT
- AZDEL COMPOSITE EXTERIOR CONSTRUCTION
- FULL ALUMINUM FRAMED WALLS - ROOF - FLOOR STRUCTURES
- BACK UP CAMERA
- SOLAR PANEL CONNECTION PORTS AT SIDEWALL & ROOF
- LP QUICK CONNECT
- POWER PATIO AWNING W/ LED LIGHT STRIP
- UPGRADED SIDE VIEW MIRRORS
- EXTERIOR SHOWER
- BLACK TANK FLUSH
- HEATED HOLDING TANKS
- DASH RADIO W/ BACKUP MONITOR
- 32" LIVING ROOM TV
- 80" BED LENGTH
- LED CEILING LIGHTS
- ONE PIECE THERMOFOIL COUNTERTOPS
- SINGLE CHILD TETHER AT FORWARD FACING DINETTE
- WINEGARD AIR 360° ½ TV ANTENNA
- EVEN-COOL A/C DUCTING SYSTEM
- CABOVER BUNK LADDER
- RECESSED 3-BURNER RANGE
- 13.5K BTU A/C
- POP-UP KITCHEN RECEPT W/110V & USB
- 10 CF 12V FRIDGE
- CARPLAY DASH RADIO
- REAR VIEW MIRROR BACK UP CAMERA MONITOR
- SIDE VIEW CAMERAS
- 6 GALLON GAS & ELECTRIC WATER HEATER
- CONVECTION OVEN
- HEATED REMOTE SIDEVIEW MIRRORS
- POWER VENTS WITH MAXXAIR COVERS
- WINEGARD AIR 360° ½ 4G/WIFI BOOSTER
- MOLDED FIBERGLASS FRONT CAP WITH WINDOW
- PORCELAIN TOILET
- UPGRADED RUNNING BOARDS CRV SUPERSPRINGS RIDE
- SUPER SPRING REAR LEAF SPRING
- SUMO SPRING FRONT SHOCK ABSORBERS
- STABILITY CONTROL
- DYNAMIC BALANCED DRIVESHAFT SYSTEM
- HEAVY DUTY FRONT & REAR STABILIZER BARS
- DRIVER/PASS SWIVEL SEATS W/S COVER, COCKPIT FOLDING TABLE
- SOLID SURFACE KITCHEN COUNTER TOPS W/S SINK
- 

Powered by focusRV