

**SPECIAL UNIT**

**\$40,995.00**

Originally \$54,995

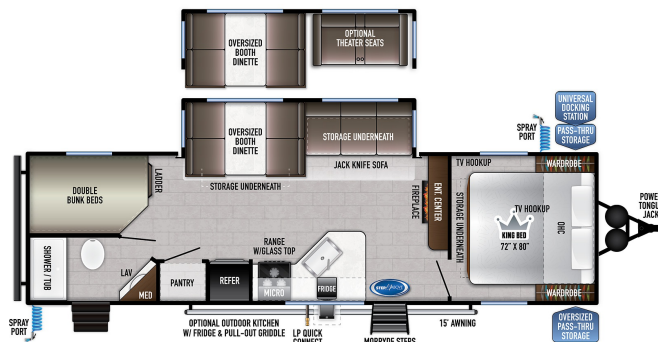
**\$111 Weekly**

**2022 EAST TO WEST DELLA TERRA 271BH**

**SPECIFICATIONS**

|                     |                |
|---------------------|----------------|
| Year                | 2022           |
| Manufacturer        | EAST TO WEST   |
| Brand               | DELLA TERRA    |
| Model               | 271BH          |
| Type                | Travel Trailer |
| Status              | New            |
| Stock #             | DT271BH2024    |
| Financing Available | ✓              |
| Warranty Available  | ✓              |
| Suspension          | Springs        |
| Leveling            | Scissor        |
| Exterior Length     | 34.4 ft.       |
| Dry Weight          | 6835 lbs.      |
| Sleeping Capacity   | 9 person(s)    |
| Interior Colour     | Silver Birch   |
| Exterior Colour     | Aluminum       |
| Slideouts           | 1              |

**Disclaimer:** Product information, pricing and photos are as accurate as possible and are subject to change without notice.



**SELLING FEATURES**

WEEKLY PAYMENT QUOTED AT 4.99% OFFERED FOR A LIMITED TIME OAC

The East to West Della Terra Collection 271 BH is fully loaded and ideal for your family! Features Include King Bed - 72" X 80" with Increased Foot Space at the Foot of Bed, Enclosed & Heated Underbelly, Enclosed Holding Tanks, 81" ...

Powered by RVHotline Canada & SynergyPro Solutions