



WOODY'S RV WORLD RED DEER

webleads@woodysrvreddeer.dsmessage.com 1-800-267-8253

71 Burnt Park Drive, Red Deer, AB T4P 0J7

Local 1-403-346-1130 | Fax 1-403-341-4380 | <https://www.woodysrv.com/>

2023 COACHMEN LEPRECHAUN 319MB

MSRP \$209,980.00

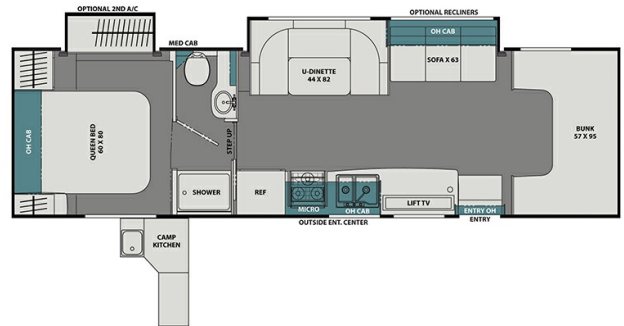
\$655 Bi-Weekly

\$10,000 down @ 8.99% APR for 60/240
months (\$67,293 C.O.B.) O.A.C.

Woody's Price \$159,888.00

SPECIFICATIONS

Year	2023
Manufacturer	COACHMEN
Brand	LEPRECHAUN
Model	319MB
Type	Motorhome
Class	C
Fuel Type	Gas
Status	New
Stock #	45830
Financing Available	✓
Warranty Available	Manufacturer
Odometer	1862
VIN	1FDXE4FN2PDD04858
Chassis	Ford E450
Engine	350HP V8
Transmission	AUTO
Suspension	N/A
Leveling	N/A
Exterior Length	32.9 ft.
Dry Weight	11680 lbs.
Sleeping Capacity	8 person(s)
Interior Colour	JASPER/SEAL WOODGRAIN
Exterior Colour	Fiberglass
Slideouts	2



Disclaimer: Product information, pricing and photos are as accurate as possible and are subject to change without notice.

SELLING FEATURES

Specifications and Features:

- Chassis Brand: Ford
- Engine Type: V8
- Chassis Model: E450
- Cylinders: 8
- Horsepower (bhp): 350
- Torque (Ft Lbs): 468
- Fuel Type: Gas
- Transmission Brand: TorqShift
- Transmission Type: Automatic
- Number Of Speeds: 6
- Driveline Type: 4X2
- Length (ft): 3...

OPTIONS & EQUIPMENT

- EXPLORE PACKAGE
- PLATINUM EDITION
- CANADIAN COMPLIANCE - FORD
- HYDRAULIC LEVELING JACKS
- EXTERIOR CAMP KITCHEN
- CRV SUPERSPRINGS RIDE
- SOLID SURFACE COUNTERTOPS W/SS SINK
- ELECTRIC FIREPLACE
- EXT ENT CENTRE (32" TV & SOUNDBAR)
- DRIVER/PASSENGER SWIVEL SEATS/W/S COVER & COCKPIT TABLE

- CARMEL CAB PAINT
- CRV SUPER SPRINGS RIDE DISCOUNT
- DISCOUNT
- DISCOUNT
- JASPER DECOR
- CD-MVSA
- RVIA SEAL
- SEAL WOODGRAIN

Powered by focusRV