



## WOODY'S RV WORLD RED DEER

webleads@woodysrvreddeer.dsmessage.com 1-800-267-8253

71 Burnt Park Drive, Red Deer, AB T4P 0J7

Local 1-403-346-1130 | Fax 1-403-341-4380 | <https://www.woodysrv.com/>

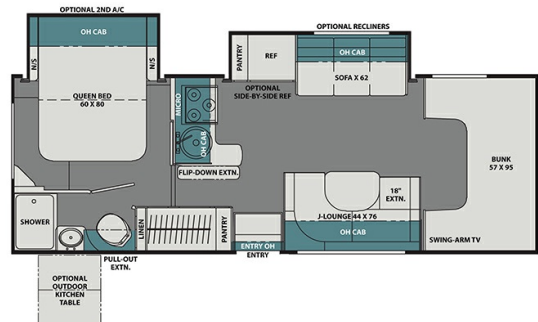
## 2023 COACHMEN LEPRECHAUN 260DS

MSRP \$194,980.00

Woody's Price

### SPECIFICATIONS

Year	2023
Manufacturer	COACHMEN
Brand	LEPRECHAUN
Model	260DS
Type	Motorhome
Class	C
Fuel Type	Gas
Status	New
Stock #	45825
Financing Available	✓
Warranty Available	Manufacturer
Odometer	1867
VIN	1FDXE4FNXPDD29510
Chassis	Ford E450
Engine	350HP V8
Transmission	AUTO
Suspension	N/A
Leveling	N/A
Exterior Length	27.4 ft.
Dry Weight	11330 lbs.
Sleeping Capacity	8 person(s)
Interior Colour	JASPER/SEALWOOD
Exterior Colour	Fiberglass
Slideouts	2



**Disclaimer:** Product information, pricing and photos are as accurate as possible and are subject to change without notice.

### SELLING FEATURES

Specifications and Features:

- Chassis Brand: Ford
- Engine Type: V8
- Chassis Model: E450
- Cylinders: 8
- Horsepower (bhp): 350
- Torque (Ft Lbs): 468
- Fuel Type: Gas
- Transmission Brand: TorqShift
- Transmission Type: Automatic
- Number Of Speeds: 6
- Driveline Type: 4X2
- Length (ft): 2...

### OPTIONS & EQUIPMENT

- CANADIAN COMPLIANCE (KPH)
- CRV SUPERSPRINGS RIDE
- CARMEL PAINTED CAB
- CRV SUPERSPRINGS DISCOUNT
- MVSA SEAL
- DRIVER/PASSENGER SWIVEL SEATS/W/S COVER & COCKPIT TABLE
- SOLID SURFACE COUNTERTOPS
- EXTERIOR CAMP TABLE
- EQUALIZER STABILIZER JACKS
- EXT. ENTERTAINMENT 24"
- PLATINUM EDITION
- RVIA SEAL
- EXPLORE PACKAGE
- DISCOUNT
- WOODY'S DISCOUNT

- JASPER DECOR
- SEAL WOODGRAIN

Powered by focusRV