



**GIMME SHELTER LTD.**

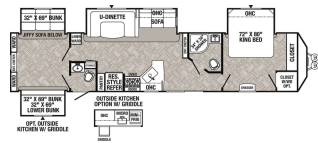
roger@gimmerv.com 1-888-387-8881  
635605 Hwy 10, Mono, ON L9V 0Z7

Local 1-519-925-5261 | Fax 1-519-925-6187 | gimmerv.com



**2021 FOREST RIVER PUMA PA39PQB  
SPECIFICATIONS**

Year	2021
Manufacturer	FOREST RIVER
Brand	PUMA
Model	PA39PQB
Type	Destination Trailer
Status	New
Stock #	1847
Financing Available	✓
Warranty Available	✓
Suspension	N/A
Leveling	N/A
Exterior Length	42.0 ft.
Dry Weight	10709 lbs.
Sleeping Capacity	10 person(s)
Interior Colour	SLATE
Exterior Colour	Aluminum
Slideouts	4



**Disclaimer:** Product information, pricing and photos are as accurate as possible and are subject to change without notice.

**INCLUDED OPTIONS & EQUIPMENT**

Awning 21'	Aluminum Wheels	Heating	1 Air Conditioning Unit(s) (Ducted) - Size: 15000 BTU	AC/DC Converter	Day Night Shades	Enclosed Underbelly
Fireplace	Heated Tanks	Hide A Bed	LPG Detector	Microwave	Smoke Detector	
Toilet Facilities	TV Antenna	DVD	Water Purifier			

Powered by SynergyPro Solutions