

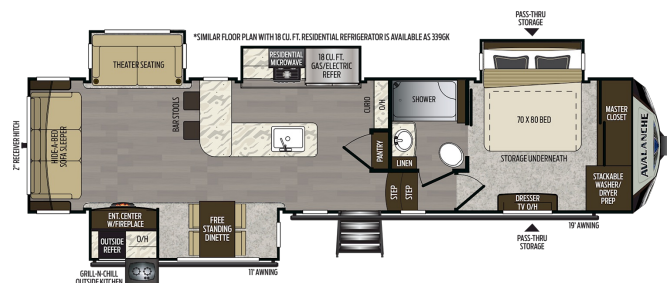
SPECIAL UNIT

\$70,895.00

2020 KEYSTONE AVALANCHE 338GK (couples)

SPECIFICATIONS

Year	2020
Manufacturer	KEYSTONE
Brand	AVALANCHE
Model	338GK (couples)
Type	Fifth Wheel
Status	New
Stock #	N760101
Financing Available	✖
Warranty Available	✖
Suspension	Springs
Leveling	Automatic
Exterior Length	38.0 ft.
Dry Weight	12470 lbs.
Sleeping Capacity	4 person(s)
Interior Colour	FOREST FLOOR
Exterior Colour	Gel Coat
Slideouts	4



Disclaimer: Product information, pricing and photos are as accurate as possible and are subject to change without notice.

SELLING FEATURES

FOR THE BEST PRICES ON AVALANCHE FIFTH WHEELS IN CANADA PLEASE CLICK ON THE **REQUEST MORE INFO** BUTTON TO ARRANGE A VIEWING

THIS AVALANCHE BY KEYSTONE RV IS A LUXURY 100" WIDE-BODY FIFTH WHEEL COLD WEATHER RATED TO -4 F = -20 CELSIUS. FEATURES INCLUDE: SOLID SURFACE COUNTERTOPS, 18 CU FT GAS/...

OPTIONS & EQUIPMENT

Aluminum Wheels	2 Air Conditioning Unit(s) (Ducted) - Size: 15k & 13.5k	Back Flush	Battery Charger	Battery Tray	AC/DC Converter	Dual Wheels
Enclosed Underbelly	Fantastic Fan	Fireplace	Free Standing Table	Fully Furnished	Heated Tanks	
Hide A Bed	Island Bed	LPG Detector	Microwave	Monitor Panel	Outside Shower	
Power Air Vents	Power Bath Vents	Rack and Ladder	Smoke Detector	Spare with Carrier	Toilet Facilities	
Trailer Hitch	Television	TV Antenna	Winterizing	18 Cu/Ft 2 Door Fridge	35k BTU Furnace	
50 AMP Service	6 Pt Hydraulic Auto Level	Backup Camera Prepared	DOUBLE AWNINGS	Frameless Tinted Windows	G-Range Tires	
Hidden Pantry	LED Ceiling Lights	Outdoor Kitchen	Outdoor Stove	Roller Blinds	Solar Panel Prep.	
Solid Surface Counter Top	Theater Seating	USB Charging Stations	Wash & Dryer Prep			